

Paquebot

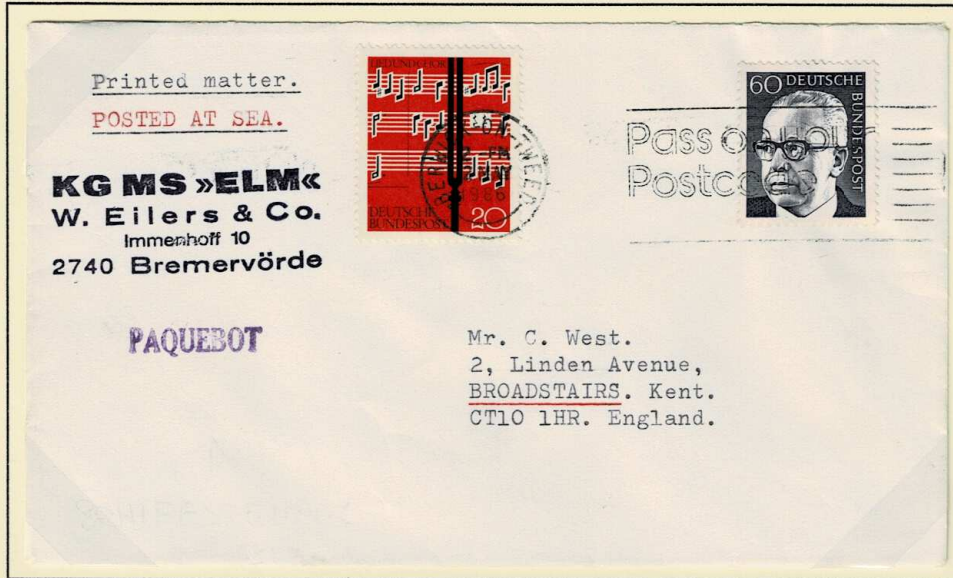
This new handstamp created in 1986

PAQUEBOT

1986

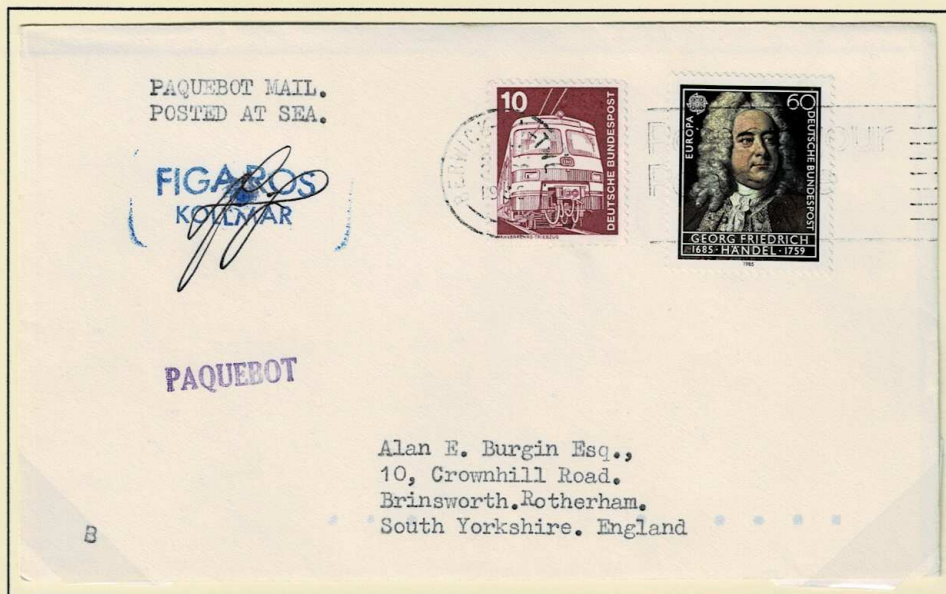
Straight line PAQUEBOT handstamp Measuring 21mmx4mm.

Here, the handstamp has been used on a cover from Germany to Kent, struck in purple.
The stamps are cancelled with the Berwick machine cancel dated 2 May 1986.



1986

Paquebot handstamp used on a cover from Germany to Rotherham, struck in purple.
The stamps are cancelled with the Berwick machine cancel dated 3 October 1986.



Paquebot (continued)

PAQUEBOT

1986

Paquebot mail from Germany to Bath, with the Paquebot mark in red.

Offloaded at Berwick where it was then struck with a Berwick double circle cancel of 3 Nov 1986 before being put into the normal inland mail service for Bath.



1991

Straight line PAQUEBOT handstamp Measuring 21mmx4mm,

PAQUEBOT

Here, the mark has been used on a cover from Denmark to USA, struck in black. The stamps are cancelled with the Berwick machine cancel dated 17 September 1971.



Paquebot (continued)

*This PAQUEBOT mark is recorded in just the three colours,
as shown on the previous pages.*

*In his article "Berwick Upon Tweed—An Enigma!", published in Gibbons Stamp Monthly
September 2019, Mike Dovey suggests that the PAQUEBOT mark used at Berwick was
introduced in 1986. He states that the handstamp was struck in purple until 1988,
in red until 1990 and in black ink in 1991.*

However, as seen on the previous page, red was used as early as 3 November 1986.

*This paquebot mark, in whatever colour, was only used on a few covers
that were sent by collectors.*